

PORTFOLIO

R I C H A N A R V E K A R

URBAN DESIGN

**TERRITORIAL CAMPUS:
ARCHAEOLOGICAL UNIVERSITY OSTIA**
(ACADEMIC)

URBAN + WAYFINDING DESIGN

MASTERPLAN FOR MEDICAL CAMPUS
(GOA,INDIA (2015))

URBAN + MOBILITY DESIGN

REIMAGINING MANEK CHOWK
(AHMEDABAD,INDIA (2015))

TERRITORIAL CAMPUS: AN APPARATUS FOR THE REAPPROPRIATION OF OSTIA, ROME, ITALY

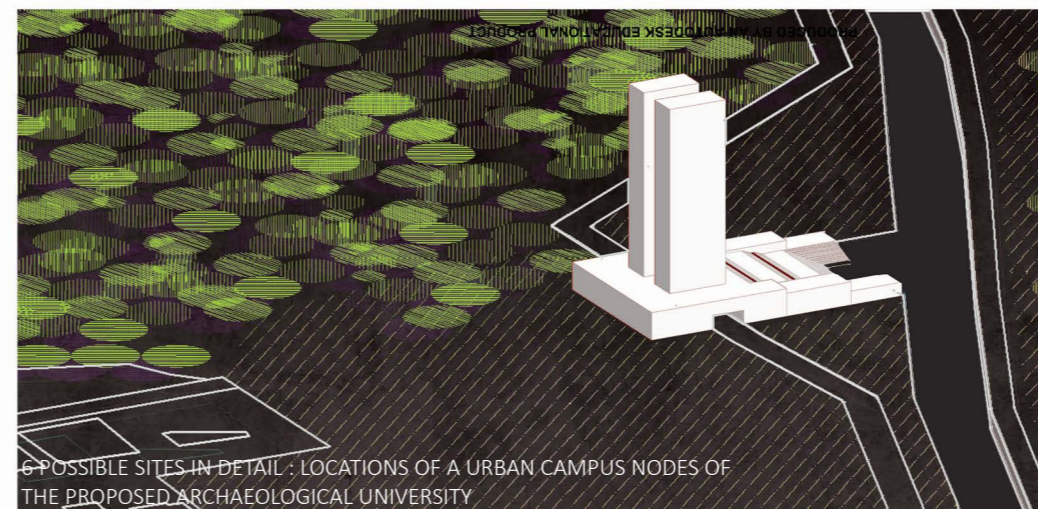
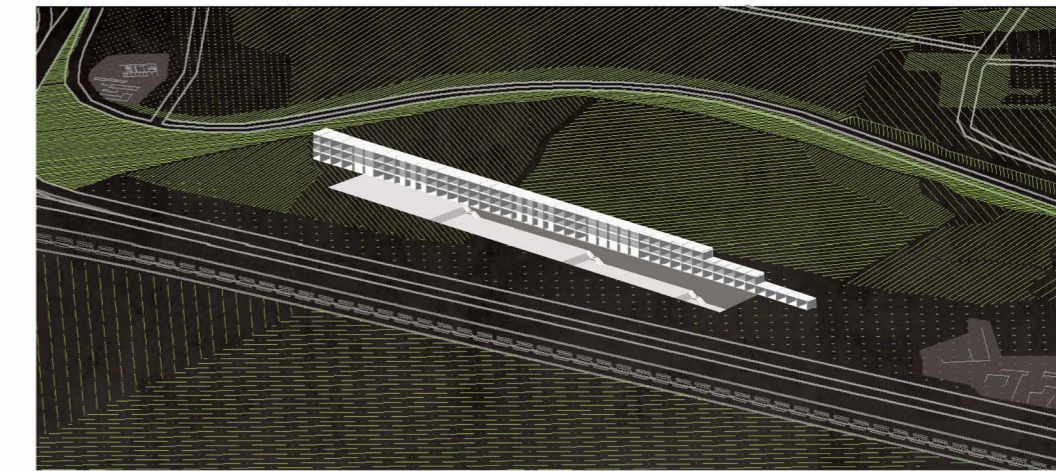
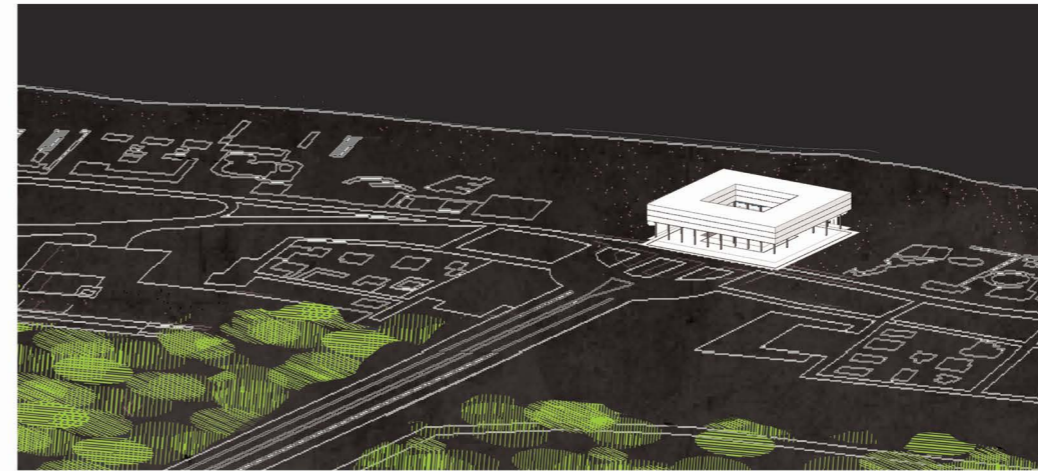
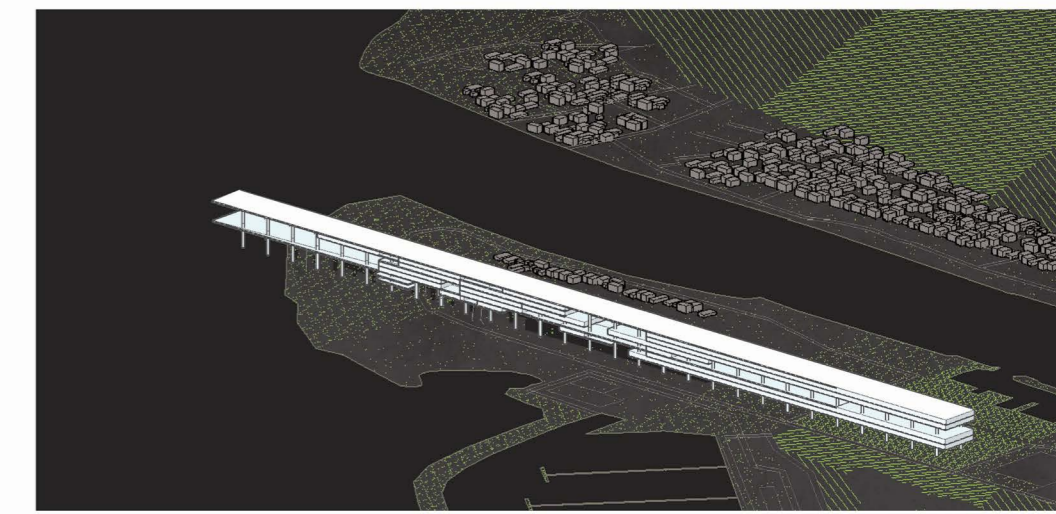
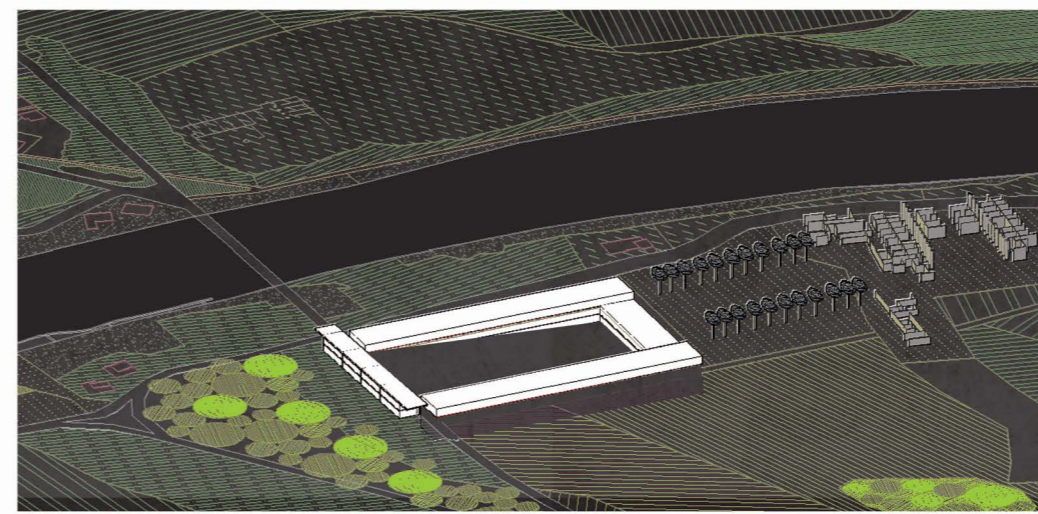
(RICHA NARVEKAR, MASTERS THESIS, THE BARTLETT, UCL, 2014)

The territory of Ostia is read as the result of the intersection (or absence of intersection) of different components: a seaside resort, a neighborhood of Rome, an agrarian landscape and a world level archaeological site. The growing disparity between these components arises out of a greater urbanising apparatus: tourism, which, if allowed to grow unchecked, threatens to flatten the urban identity of Ostia into the same touristic mass that other coastal touristic sites on the Mediterranean, such as Benidorm and Rimini are made of.

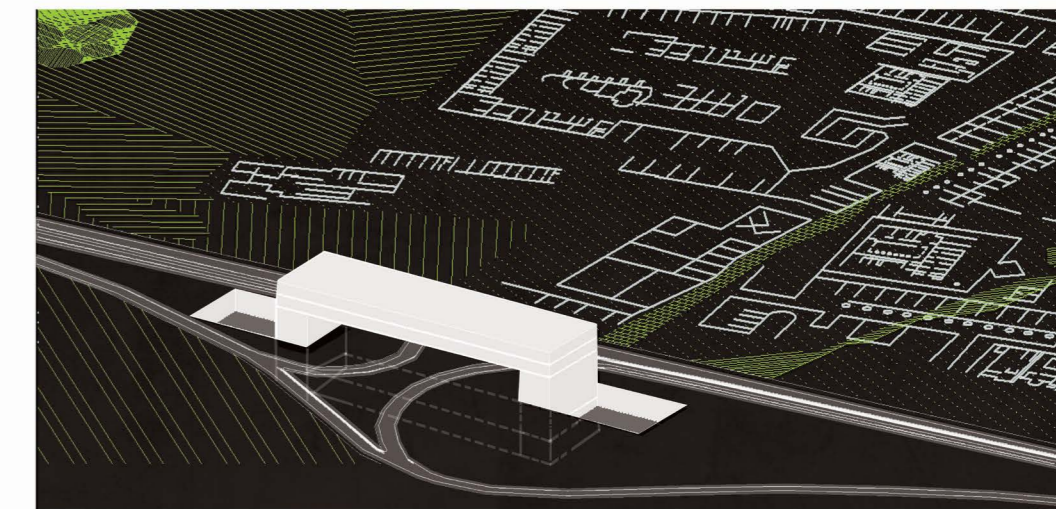
The project seeks to expand on the prolific archaeological heritage of Ostia to create a new unifying apparatus that counters this. Through a series of strategic and site specific interventions, it aims to expose possible intersections of these territorial components through the idea of a Territorial Campus.

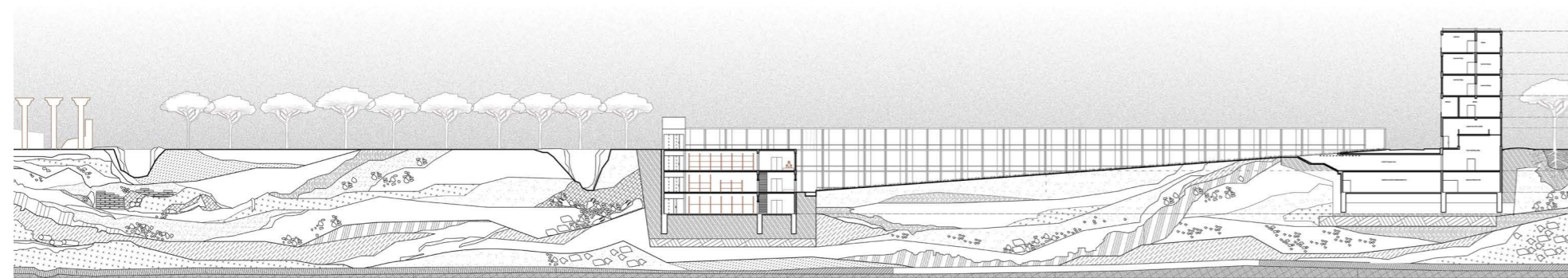
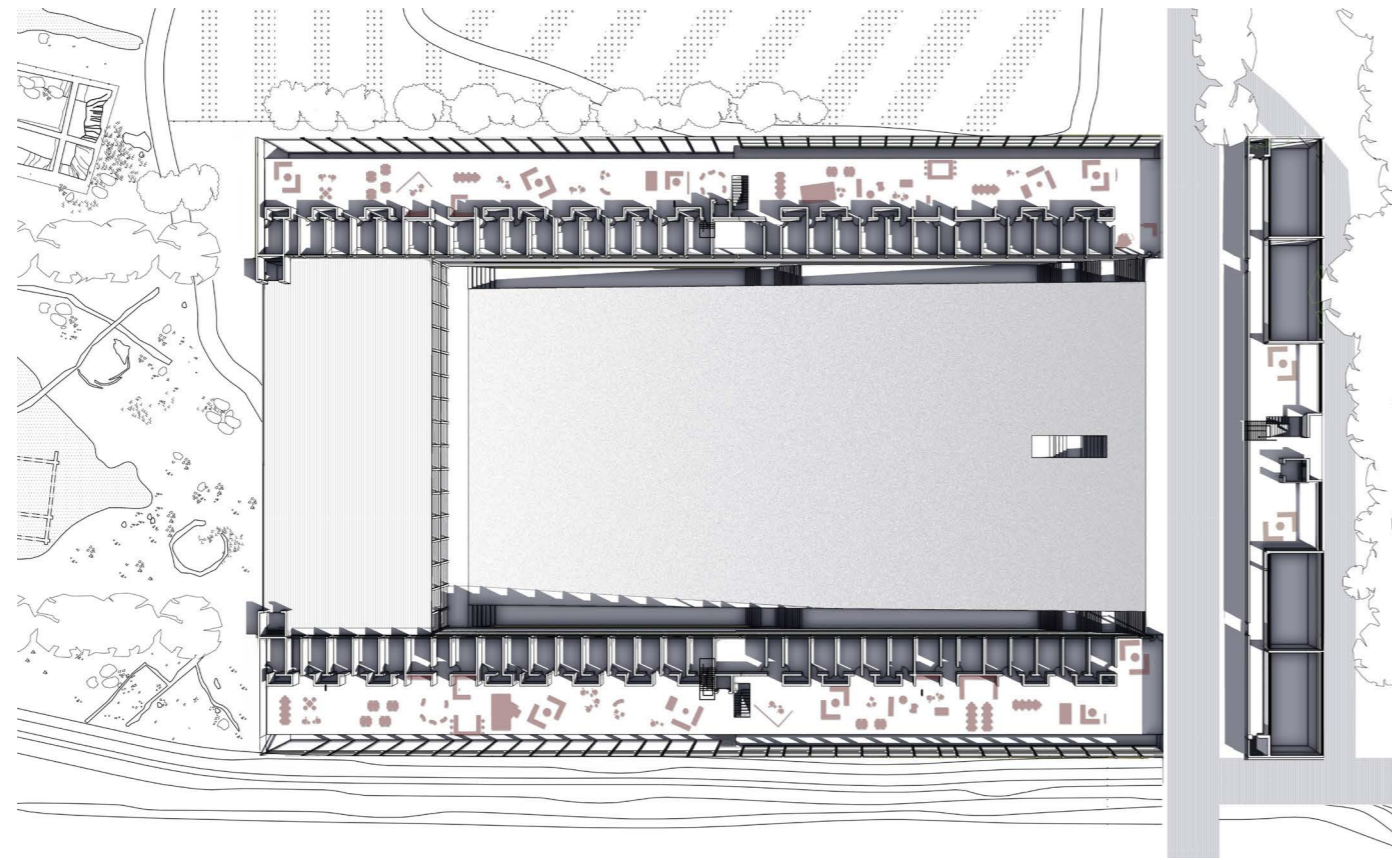


MASTERPLAN SHOWING THE ARCHAEOLOGICAL RUINS, COASTLINE OF OSTIA AND 12 STRATEGIC SITES FOR POSSIBLE LOCATIONS OF URBAN CAMPUS NODES OF THE PROPOSED ARCHAEOLOGICAL UNIVERSITY



6 POSSIBLE SITES IN DETAIL : LOCATIONS OF A URBAN CAMPUS NODES OF THE PROPOSED ARCHAEOLOGICAL UNIVERSITY

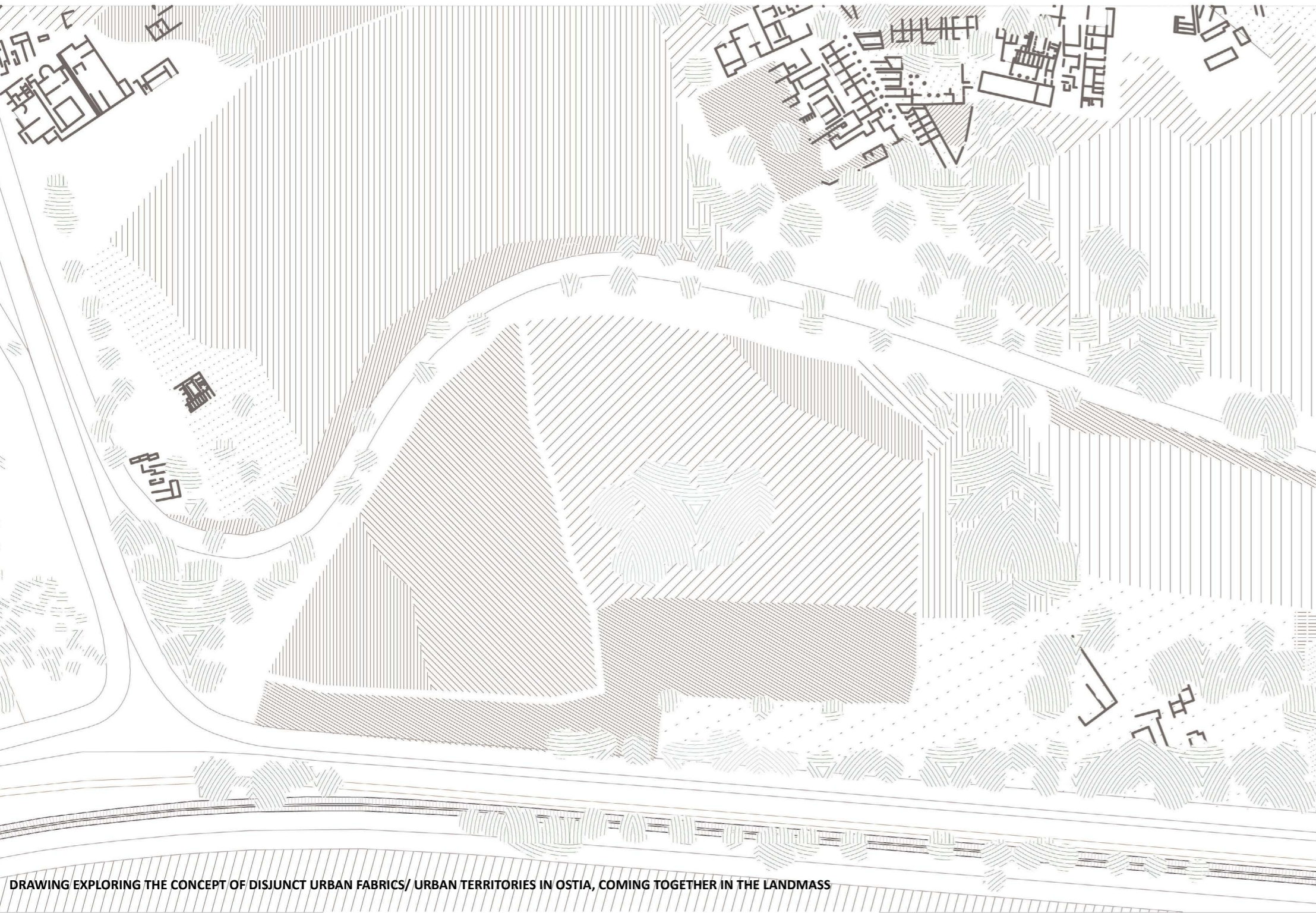




SITE NO. 6: LAB + HOSTEL OF ATHE ARCHAEOLOGICAL UNIVERSITY
 PLAN AND CROSS SECTION SHOWING UNIVERSITY RESIDENCES FLANKING A SLOPED PLANE, THAT FORGES A VISUAL CONNECTION FROM THE ROAD LEADING INTO OSTIA FROM FCO AIRPORT, TO THE ARCHAEOLOGICAL RUINS IN THE DISTANCE



SITE NO. 6: LAB + HOSTEL OF THE ARCHAEOLOGICAL UNIVERSITY
 VIEW SHOWING UNIVERSITY RESIDENCES FLANKING A SLOPED PLANE, THAT FORGES A VISUAL CONNECTION FROM THE ROAD LEADING INTO OSTIA FROM FCO AIRPORT, TO THE ARCHAEOLOGICAL RUINS IN THE DISTANCE



DRAWING EXPLORING THE CONCEPT OF DISJUNCT URBAN FABRICS/ URBAN TERRITORIES IN OSTIA, COMING TOGETHER IN THE LANDMASS



VIEW SHOWING VARIOUS SITES OF THE UNIVERSITY AS LOCATED IN THE MASTERPLAN, WITH SITE NO.3: MUSEUM OF THE UNIVERSITY AT THE ENTRANCE TO OSTIA IN THE FOREGROUND, LEFT



VIEW SHOWING SITE NO.4: JUXTAPOSITION OF THE TOURISTIC TERRITORY WITH THE ARCHAEOLOGICAL
A PLAZA ON THE BEACH, AT THE END OF VIA CRISTOFORO COLOMBO HAS AN AWARENESS CENTRE BUILT ONTO IT, RELATING THE NEW TOURISTIC FABRIC WITH THE ANCIENT ARCHAEOLOGICAL UNDER LAYER

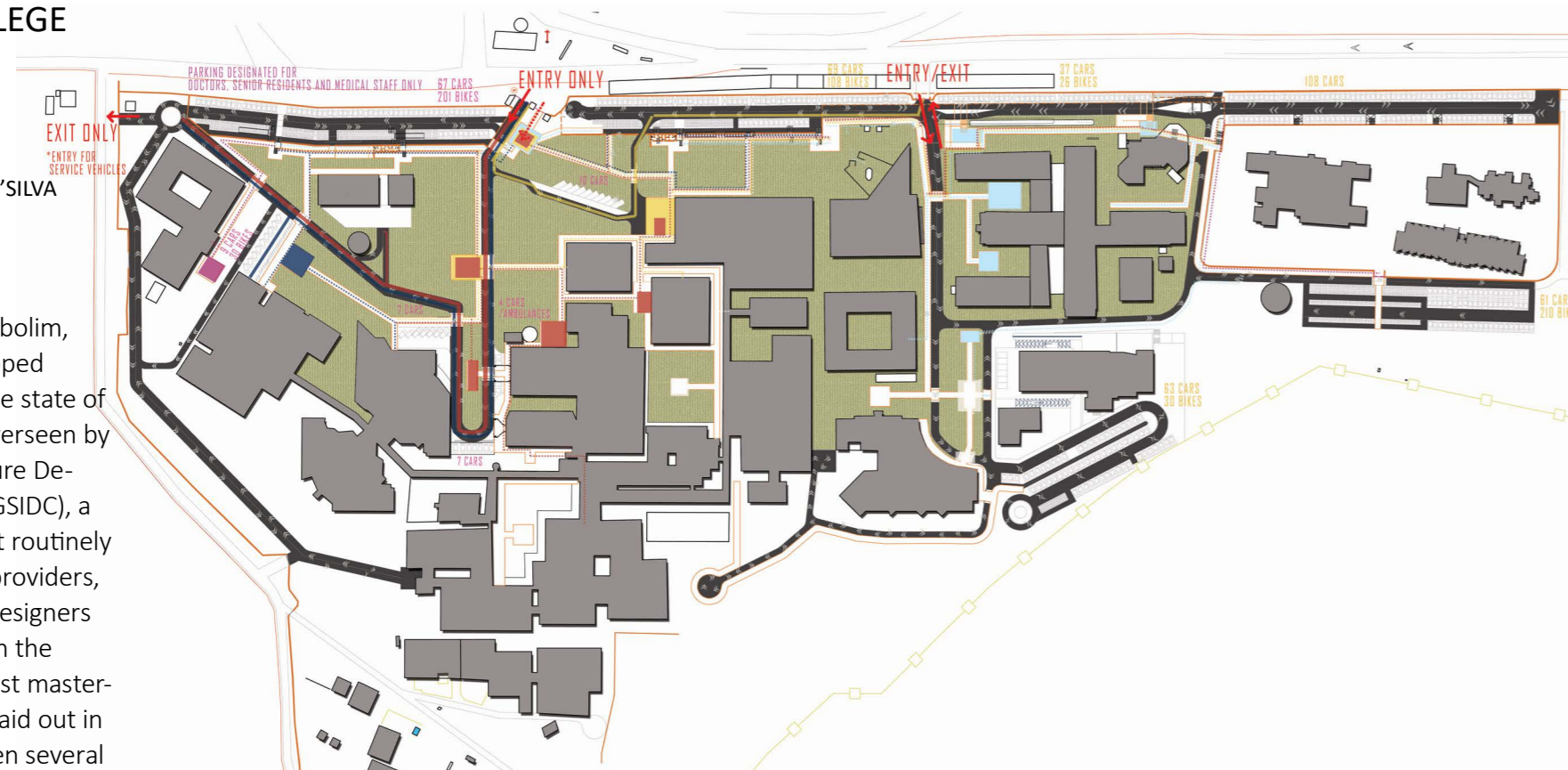


VIEW SHOWING VARIOUS SITES OF THE UNIVERSITY AS LOCATED IN THE MASTERPLAN, WITH SITE NO.1: REHABILITATIVE HOUSING AT TOROSCALO+ MARINE ARCHAEOLOGICAL CENTRE IN THE FOREGROUND

MASTERPLAN FOR GOA MEDICAL COLLEGE (GMC) CAMPUS

COMMISSIONED TO ARCHITECTURE T- TALLULAH D'SILVA

The GMC Campus at Bambolim, Goa is the only fully equipped government hospital in the state of Goa. Its operations are overseen by the Goa State Infrastructure Development Corporation (GSIDC), a state regulatory body that routinely hires out private service providers, including architects and designers to create new buildings on the campus. Since the very first masterplan for the campus was laid out in the 1970s, there have been several building



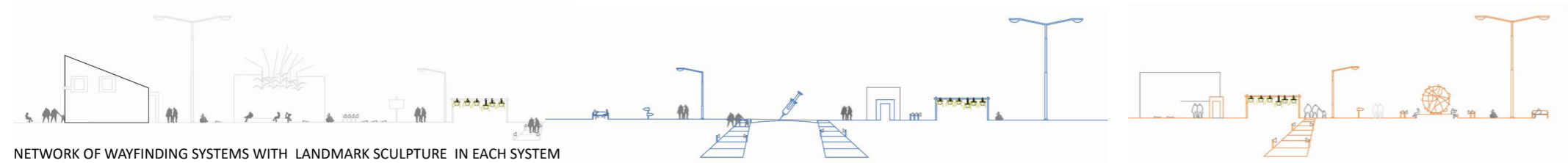
MASTERPLAN SHOWING REWORKED TRAFFIC CIRCULATION, PARKING SPACES FOR VEHICLES, ENTRY AND EXIT POINTS AND PLAN OF WAYFINDING SYSTEMS

The GMC Campus at Bambolim, Goa is the only fully equipped government hospital in the state of Goa. Its operations are overseen by the Goa State Infrastructure Development Corporation (GSIDC), a state regulatory body that routinely hires out private service providers, including architects and designers to create new buildings on the campus. Since the very first masterplan for the campus was laid out in the 1970s, there have been several building additions and spatial changes to the campus, but there has never been an attempt to streamline or organise circulation between the component buildings. As a result, wayfinding on the campus today is a nightmare. Parking is completely unregulated and has occupied all open space all over the campus, leaving very little quality pedestrian space. This is also the only medical college in the state with students on campus



THE EXISTING OPAQUE PLASTERED WALL IS REPLACED BY A 4m HIGH TRANSPARENT METAL GRILLWORK SCREEN. ALL VEHICLES PARK BEHIND THIS. AS GMC IS AN IMPORTANT LAND-MARK BETWEEN 2 MAJOR GOAN CITIES, THIS SCREEN ALSO SERVES AS AN INTERESTING URBAN ART WALL.

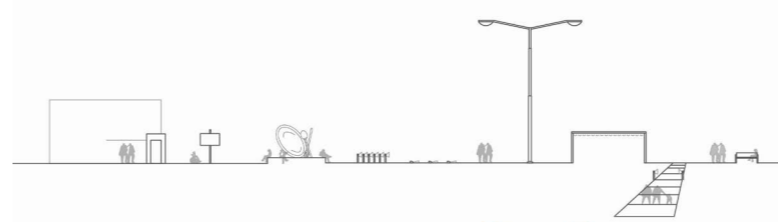




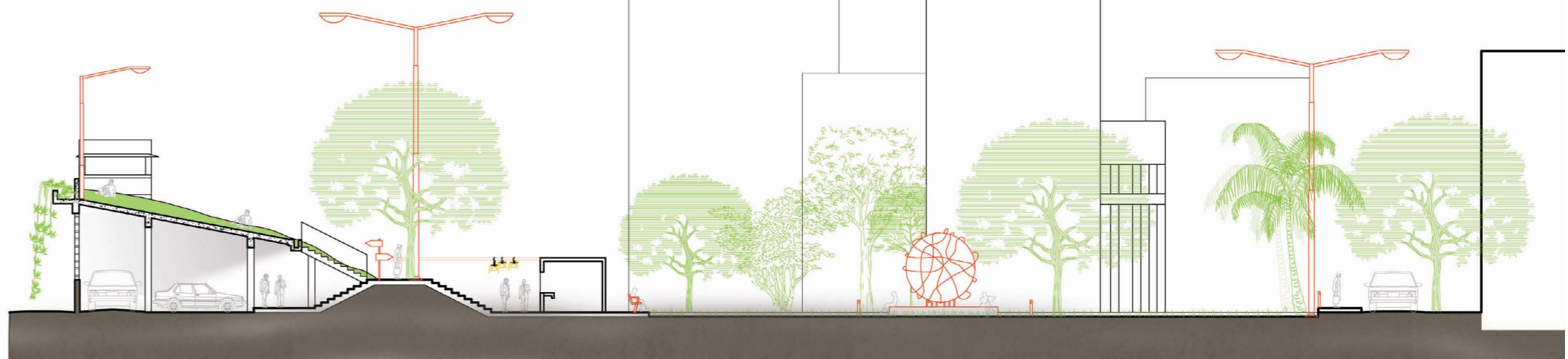
NETWORK OF WAYFINDING SYSTEMS WITH LANDMARK SCULPTURE IN EACH SYSTEM



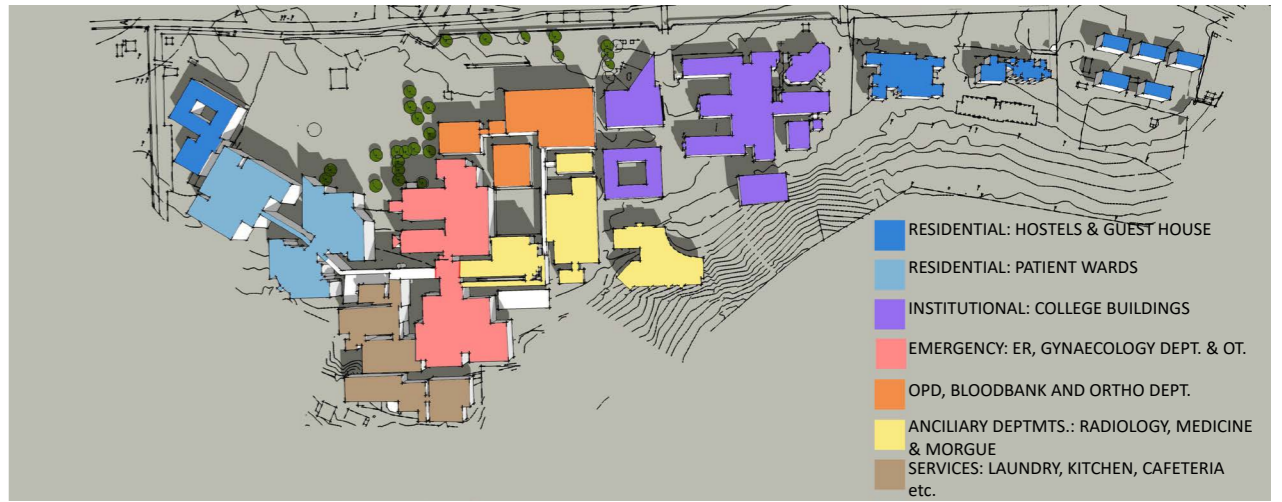
3D VISUAL SHOWING PARKING/ PEDESTRIAN RELAXATION SPINE AND WAYFINDING SCULPTURE ALONG EMERGENCY ROUTE



and provides very little quality outdoor space for students.
 As GMC is a government hospital, and the largest segment of its clientele/patients come from the lowest economic strata of society, one sees a lot of public transport users and pedestrians come into and use the campus. But poor parking facilities and lack of quality pedestrian space makes the experience of navigating the campus a very difficult one for them.
 Our response to the brief we were given: i.e. to organise circulation and parking was to make 2 primary interventions:
 a. A parking spine along the front of the campus that takes care of 90% of the parking needs of the campus, and doubles up as a green pedestrian zone above.



PROPOSED CROSS SECTION SHOWING PARKING/ PEDESTRIAN SPACE, KIOSKS AND WAYFINDING ELEMENTS



CAMPUS PLAN SHOWING BUILDING GROUPS

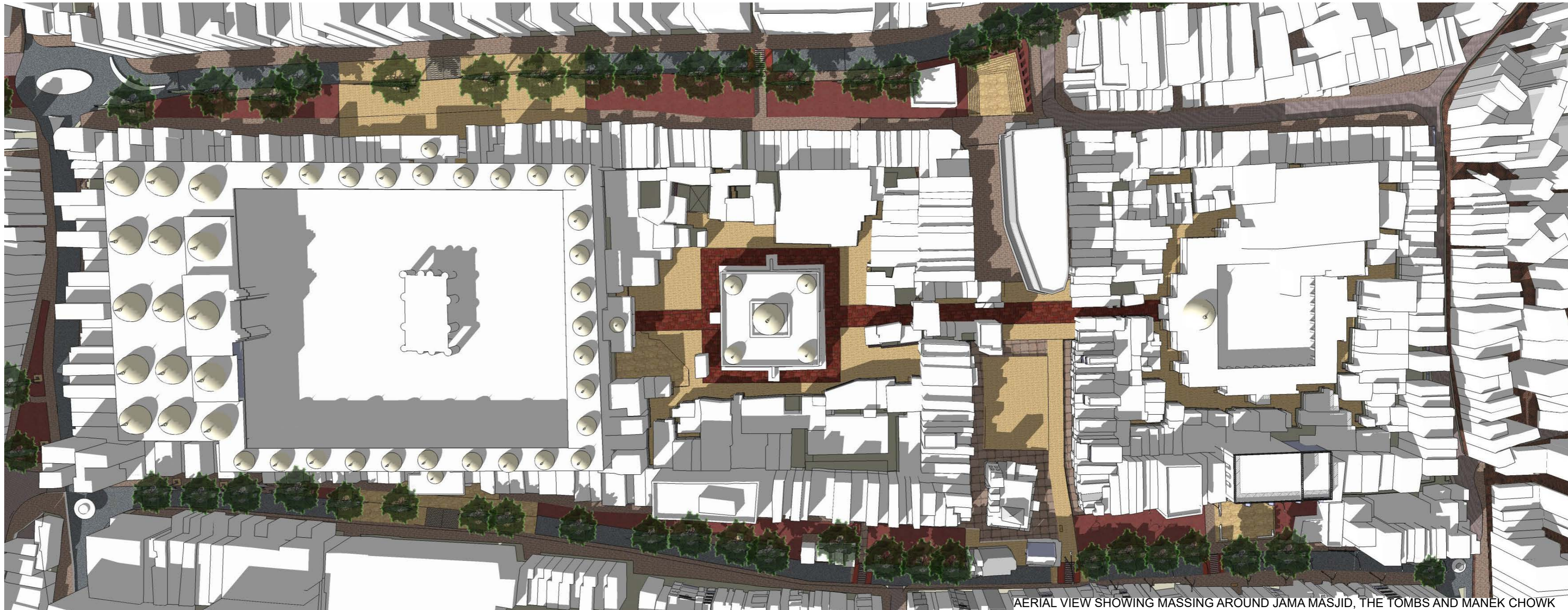
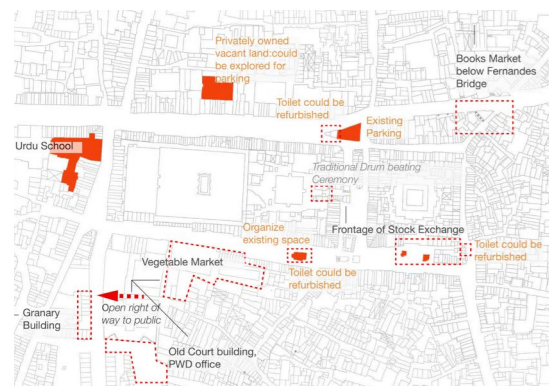
b. A colour coordinated system of wayfinding that groups buildings of similar programme by colour, and then uses a kit of elements, spread out over the campus... from lampposts to coloured paving stones to coloured architraves to wayfinding sculptures/ landmarks to help end users that may speak any language to find building groups easily, from any point on the campus.

REIMAGINING MANEK CHOWK AHMEDABAD, GUJARAT, INDIA

COMMISSIONED TO EMBARQ INDIA
(WRI ROSS CENTRE FOR SUSTAINABLE STUDIES)

Manek Chowk is a historic urban square in Old Ahmedabad, in close vicinity to the Jama Masjid and tombs of the King and Queen- Raja no Hajiro and Rani no Hajiro. Over time and change of demographic in the area, it has still survived as a very important, vital urban square for the inhabitants of the old city.

ANALYSIS OF OPPORTUNITIES IN THE SURROUNDING AREAS

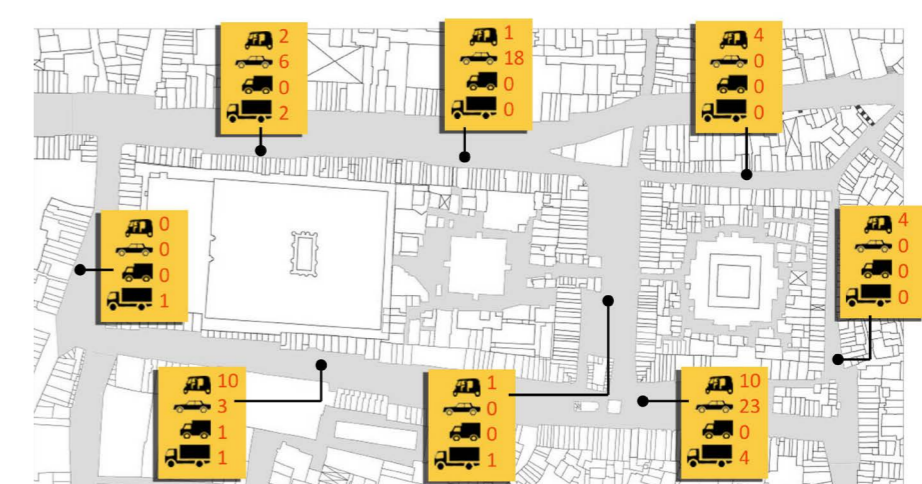
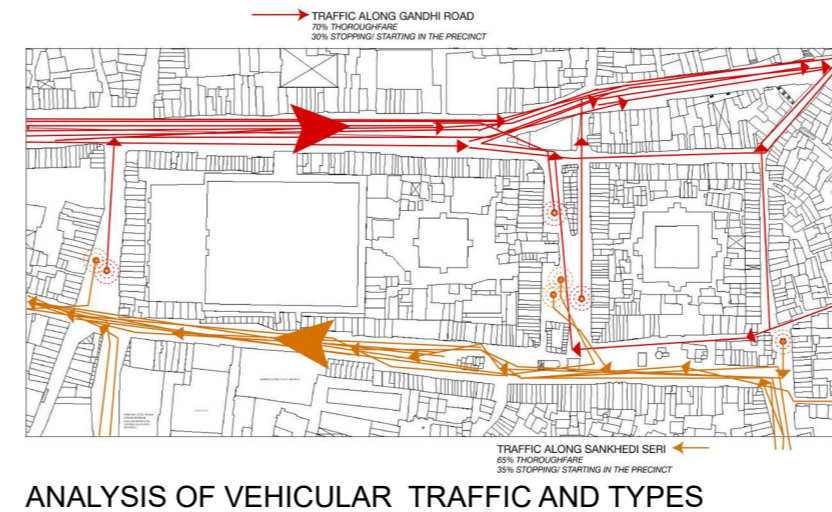
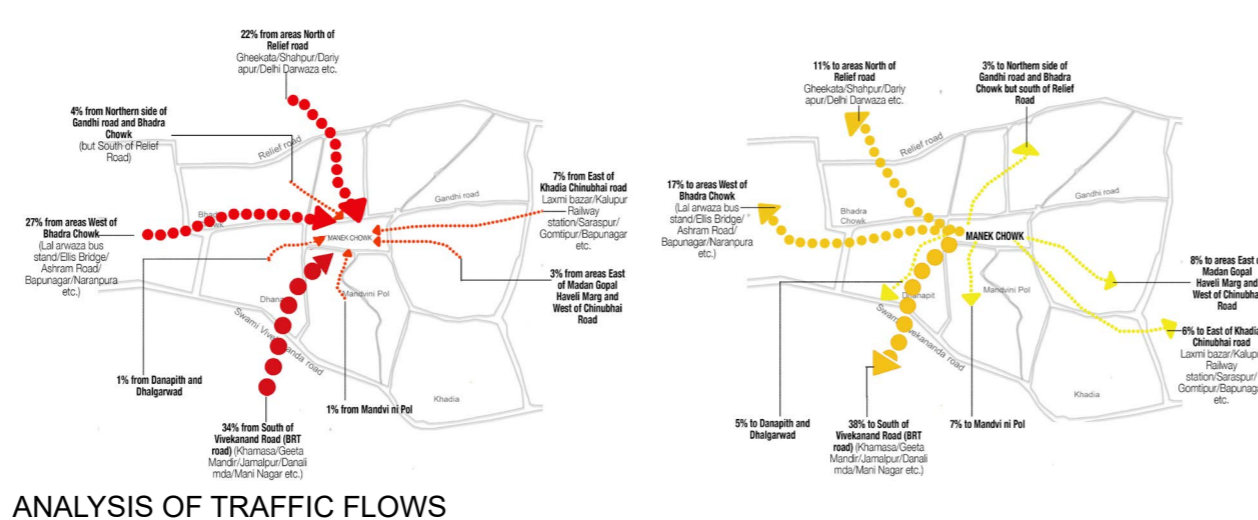


AERIAL VIEW SHOWING MASSING AROUND JAMA MASJID, THE TOMBS AND MANEK CHOWK

Over time, owing to increasing traffic and disorganized vending, the area has become progressively more difficult for pedestrians to use.

Embarq's project proposal analyses the traffic flows in the area and reimagines how these can be redirected to create better pedestrian access and walkways.

Proposal shows Areas outside the main entrances into the historic Jama Masjid with new paving to indicate pedestrian and hawker zones.



PROPOSED FLOORING DIFFERENTIATION OUTSIDE JAMA MASJID



PROPOSED FLOORING DIFFERENTIATION OUTSIDE JAMA MASJID

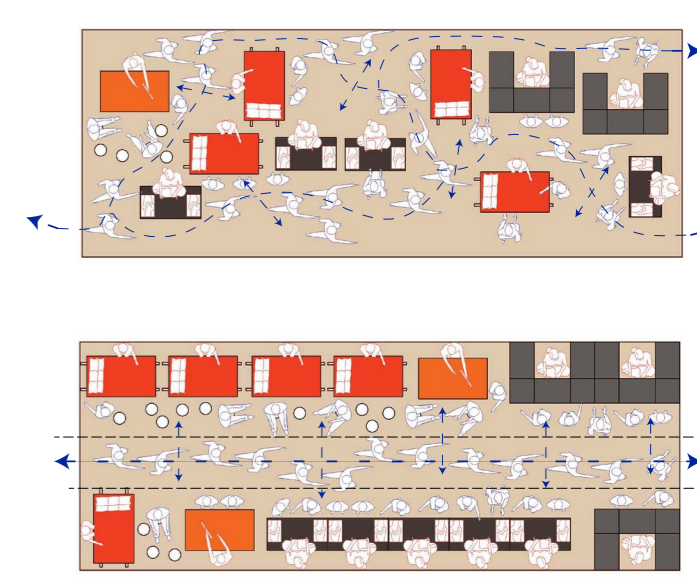
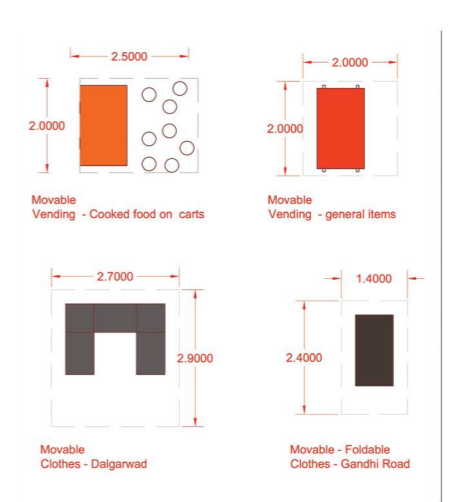
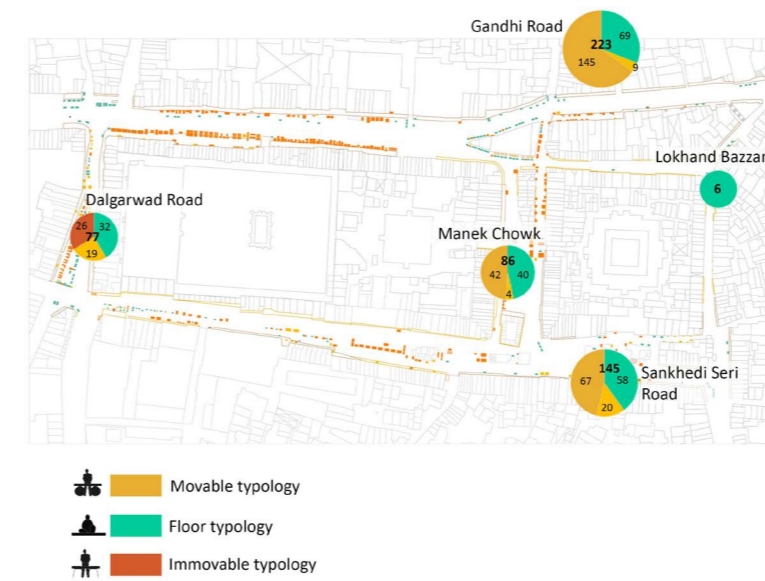
Organizing infrastructure for informal vending/hawkers was an important feature of the exercise of as well. Simple differentiations in paving colour and divisions of the indicated area into occupiable/ leasable parcels were the key design intervention. This is accompanied by characteristic signage in strategic locations. The square itself is a site of multifarious diurnal activities including local cattle grazing in the early morning, parking and general hawking in the day time and food vending- with tables and chairs being set into the square in the evenings.



MANEK CHOWK 11AM-5PM



MANEK CHOWK 6PM-12AM



ANALYSIS OF VENDOR TYPES AND PROPOSAL TO ORGANIZE



PROPOSED FLOORING DIFFERENTIATION IN MANEK CHOWK



PROPOSED FLOORING DIFFERENTIATION IN MANEK CHOWK

To aid in expanding the social-informal vending areas to an area of historic value in close proximity--existing service buildings/ informal encroachments are proposed to be rehabilitated close by, and a raised performance space was created in front of the old stock exchange building.

This would help in keeping traffic to the asphalted areas and allowing for valuable social exchanges which would continue to maintain the urban character of the area.



AREA AROUND OLD STOCK EXCHANGE



PROPOSED STOCK EXCHANGE AREA RENEWAL